



Introduction of ALTEO





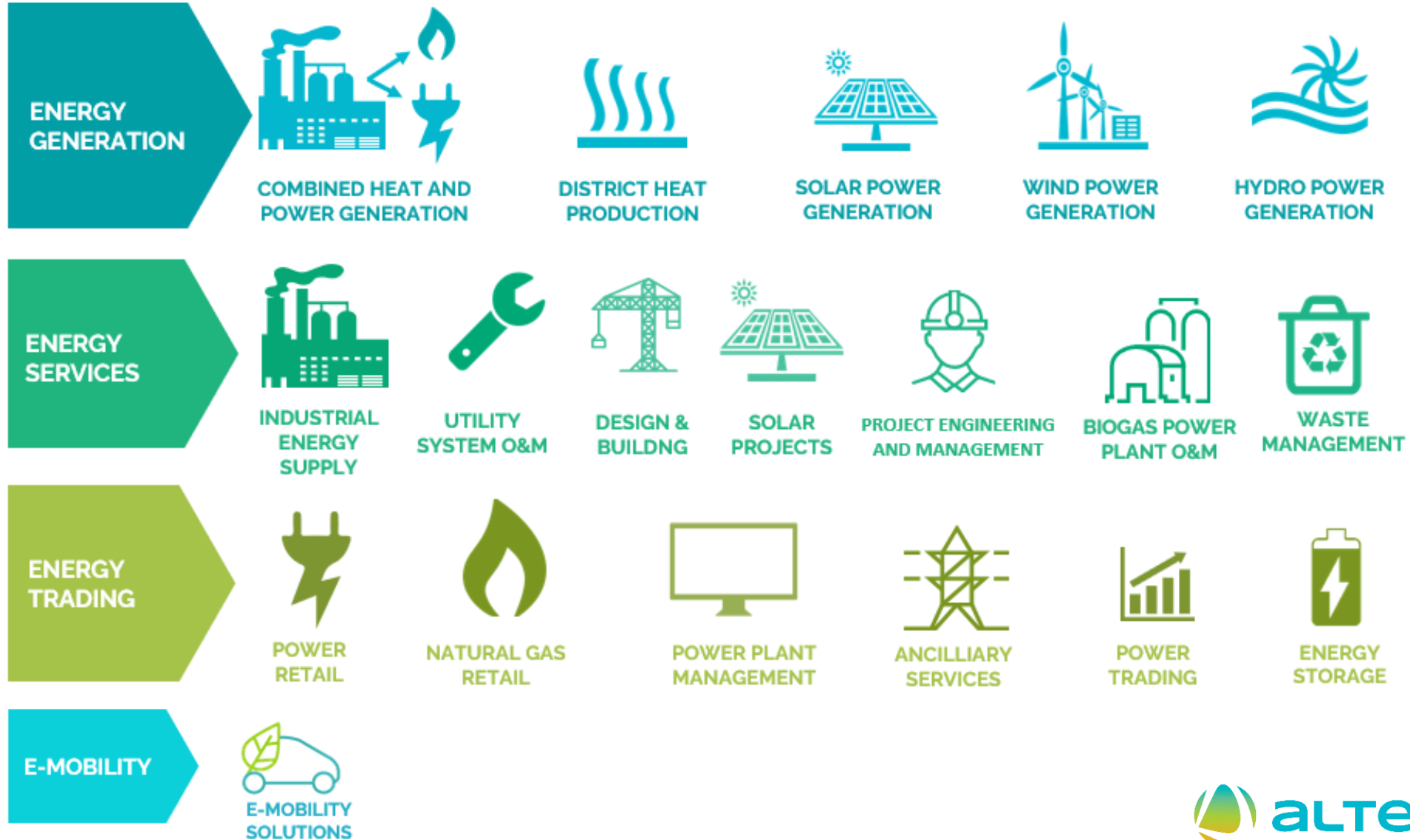
Our vision is to create sustainable business advantage to our clients with the best available energy solutions of today, in order to become the enterprises of tomorrow. Together.



INTRODUCTION OF ALTEO

ALTEO'S ACTIVITIES AT A GLANCE

INTEGRATED ENERGY COMPANY WITH SERVICES ALONG THE WHOLE ENERGY VALUE CHAIN



INTRODUCTION OF ALTEO

ALTEO'S ACTIVITIES AT A GLANCE

11 MW

energy storage capacity

60 000 t/a

organic waste managed

800 GWh

electricity sold

2010

year of entering Budapest Stock Exchange

220.3 MW

Power plant capacity

778 MW

Heat generating capacity

307

employees

803 GWh

electricity generated

9200 TJ

heat generated

103 Bn HUF

turnover (2022)

219 GWh

traded natural gas

1400 MW

managed renewable power plant capacity



alteo

15

years with
full of energy

History of ALTEO

2008

Establishment of ALTEO

2010

Listing on the Budapest
Stock Exchange (BÉT)

2016

First IPO (BÉT)

2021

BUX membership (BÉT)

2023

Majority shareholder
change

Acquisition of two natural gas fired power plants
from E.on



2009

Start of our power trading business line

Acquisition of first 3 wind turbines



2012

Acquisition of SINERGY from RWE



2015

Control center. Industrial references. District heat
production.

First solar power plant in our portfolio



2017

Building CEE region's first and biggest industrial
size battery power storage system



2018

Acquisition of a 25 MW wind portfolio,
EPC of 22 MW PV



2019

New business lines:
waste management, e-mobility

Acquisition of a 15 MW wind portfolio



2020

New business line:
production management of renewables

Building the next industrial size battery power
storage system



2021

Start the first electrical steamboiler



2022

Acquisition of FE-Group



2022

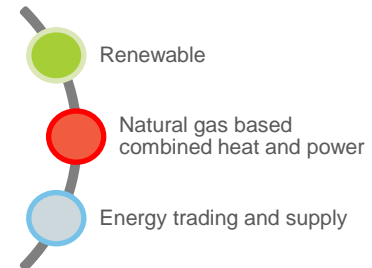
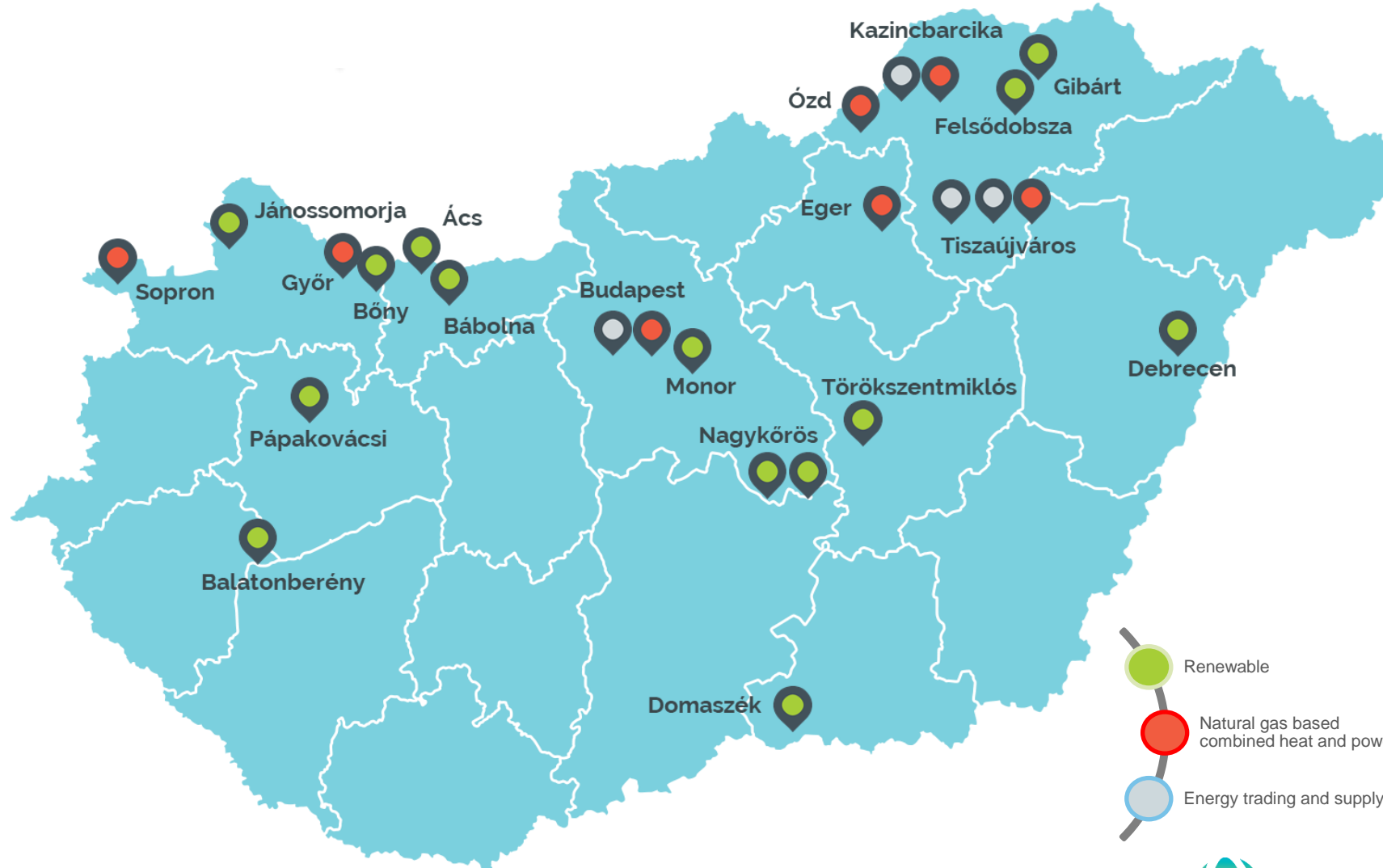
Acquisition of Nagykörös Biogas Plant



2023

INTRODUCTION OF ALTEO

COUNTRY-WIDE OPERATIONS





AZ ALTEO CSOPORT TAGJA

FE-GROUP

COMPANY OVERVIEW

- **> 140** employees
- **20 000** m²
- **30 000** tons
- Export to **8** countries
- Market share
 - WEEE **10%**
 - packaging waste **5%**



PRODUCTS AND SERVICES

WEEE, Batteries, Metal DIVISION

Wasteflows:

- WEEE 9.000 t/a
- Electric cables and cords 85 t/a
- Battery waste 800 t/a
- UBC (used beverage cans) 200 t/a
- Metal 750 t/a



PRODUCTS AND SERVICES

Packaging- and printing waste DIVISION

Wasteflows:

- paper 14.000 t/a
- plastic 3.800 t/a
- Other (glass, wood, tetrapack) 1.500 t/a



SERVICES

Complex waste management services

For large companies

Complete solution from collection to final recycling

Adequate personnel and technical background

Benefits

Stable service, long-term stability, top quality, flexible changes



MARKETS

14 000 tons of paper (H, A, RO, HR, SRB)

4 000 tons of fim (H, D, SLO)

800 tons of Pb batteries (H, A, CZ, SLO, BG, RO)

940 tons of plastics from WEEE (H, A, PL)

1 500 tons of CRT tubes (H, D)

200 tons of Aluminum beverage cans (D)



SITE

Budapest, X. Sirkert str 2-4.

Packaging waste Process Factory

Selection-
and Baling
Unit
+
Shredder

WEEE Process Factory

Manual
processing-
dismantling

Shredding

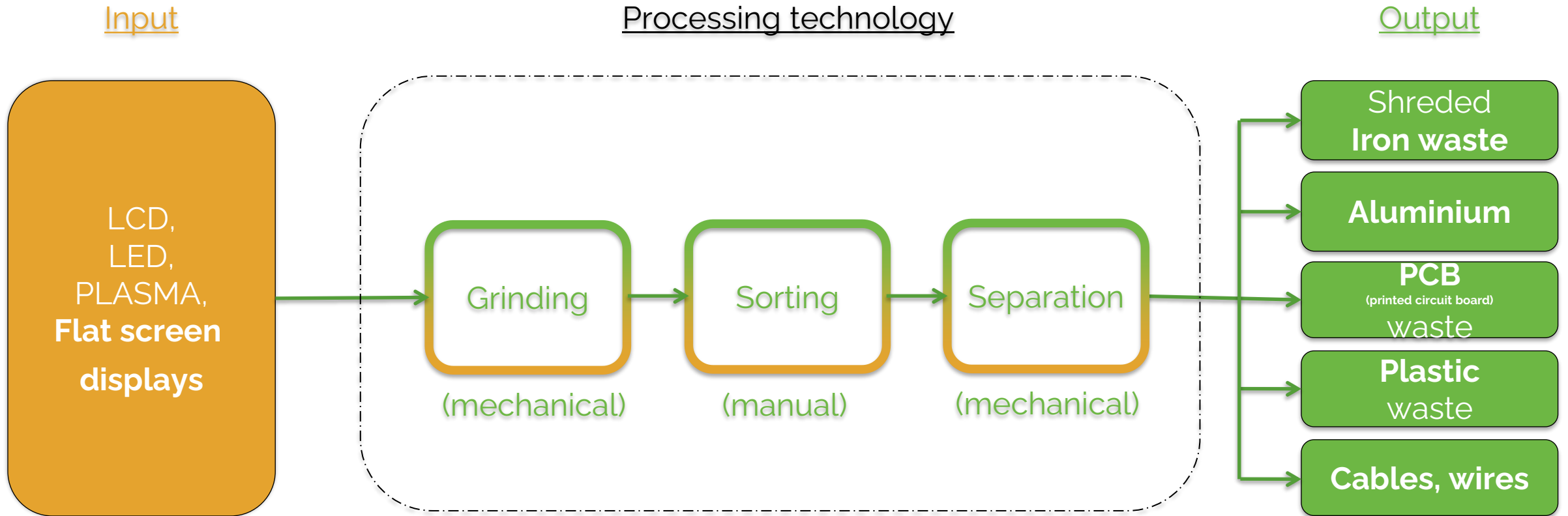
CRT, LCD
dismantling

PET Process Factory

PET
Sorting
Grinding

PET flakes
washing

PET granulates



Input

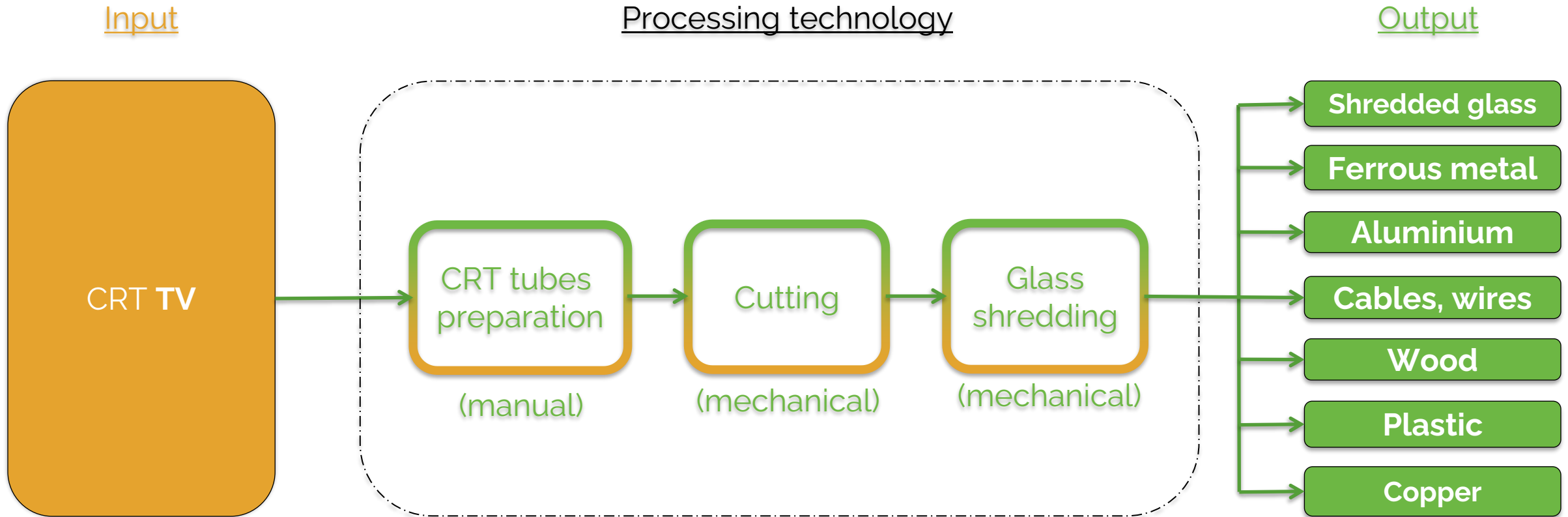


Processing technology



Output





Input

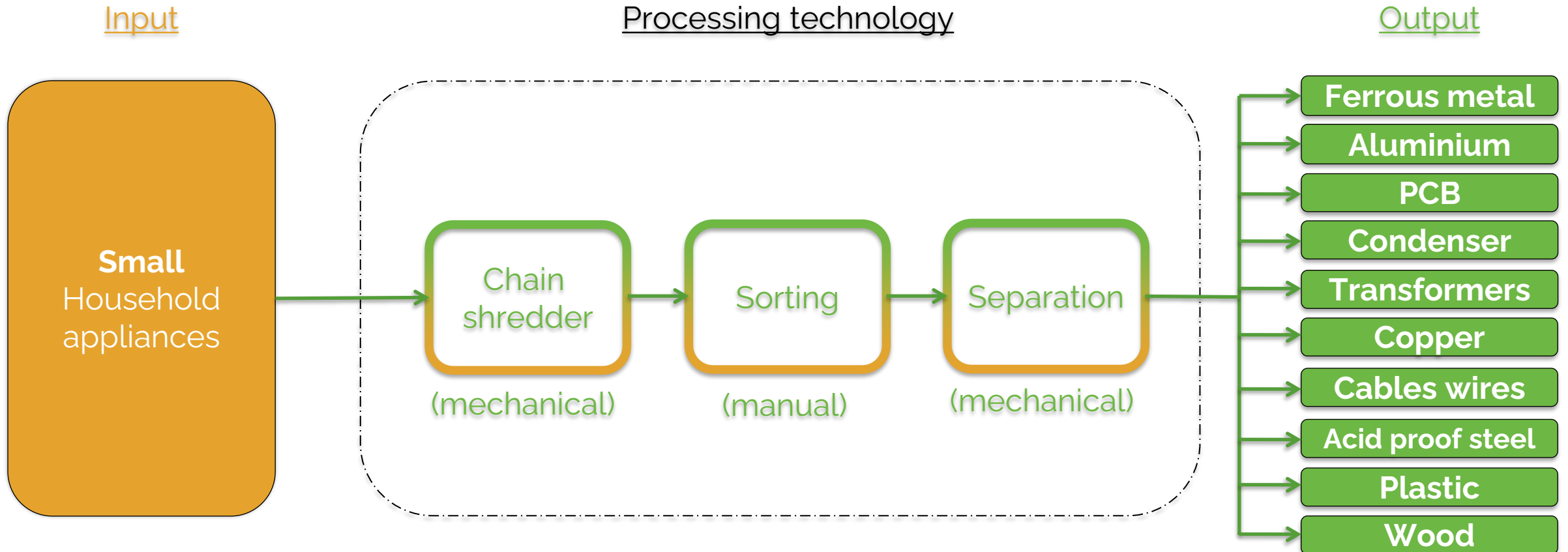


Processing technology



Output





TECHNOLOGY

Electronic waste processing

Small household appliances

Input

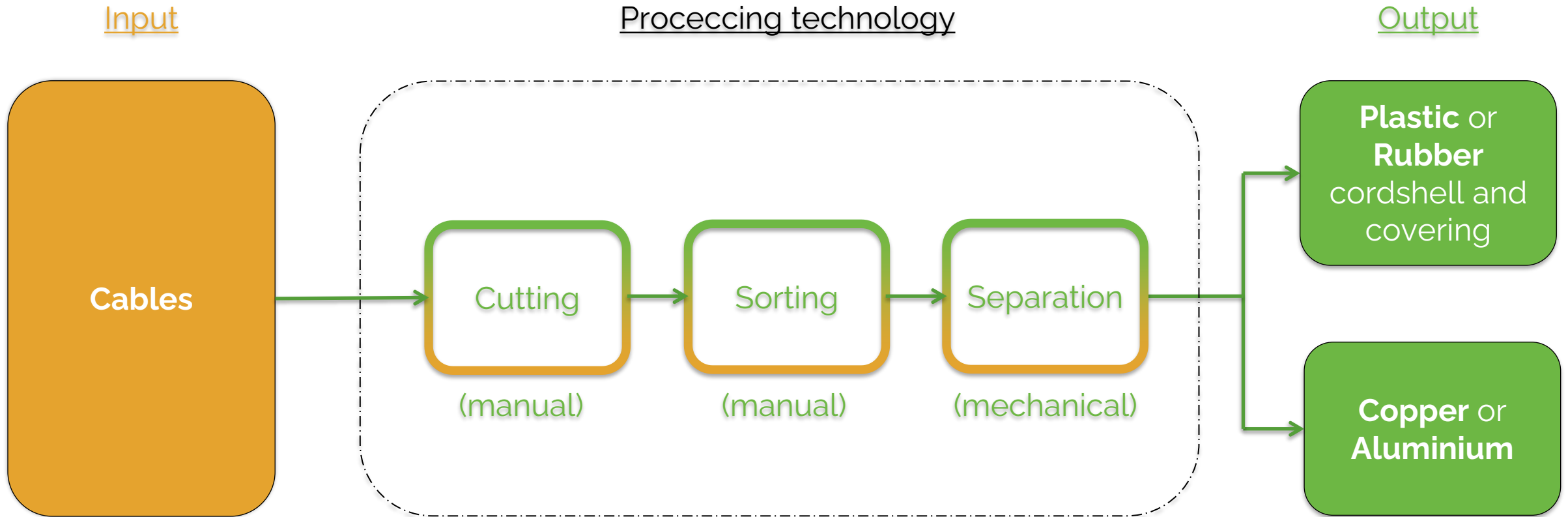


Processing technology



Output





Input

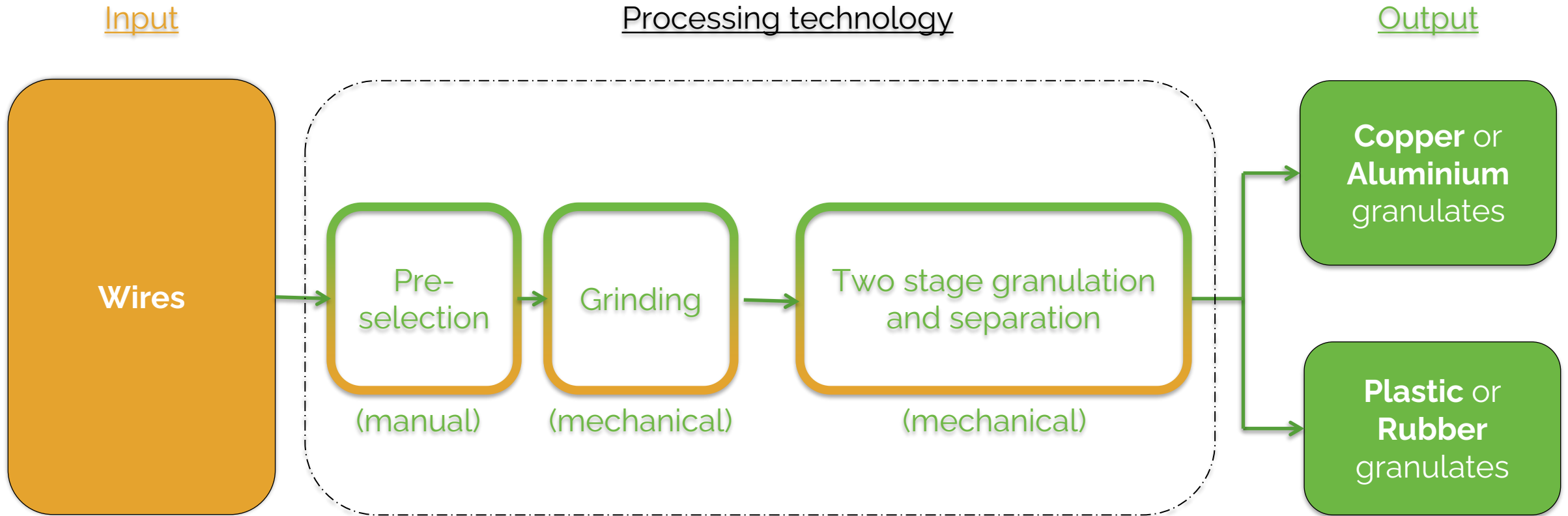


Processing technology



Output





Input

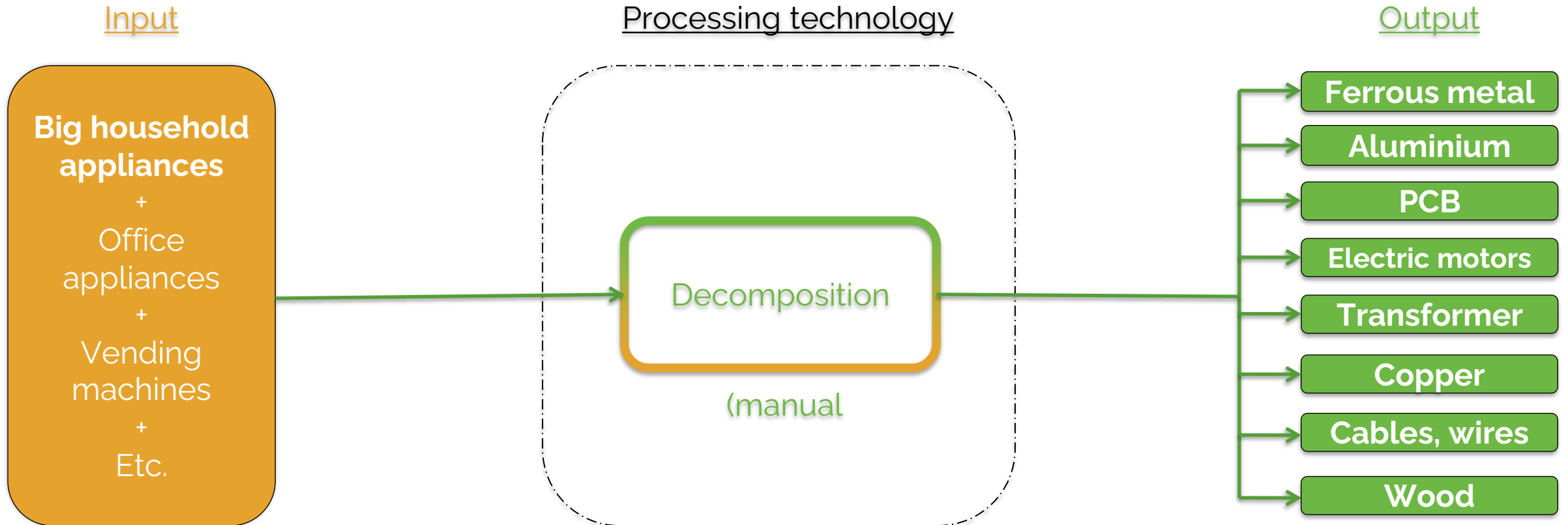


Processing technology



Output





Input

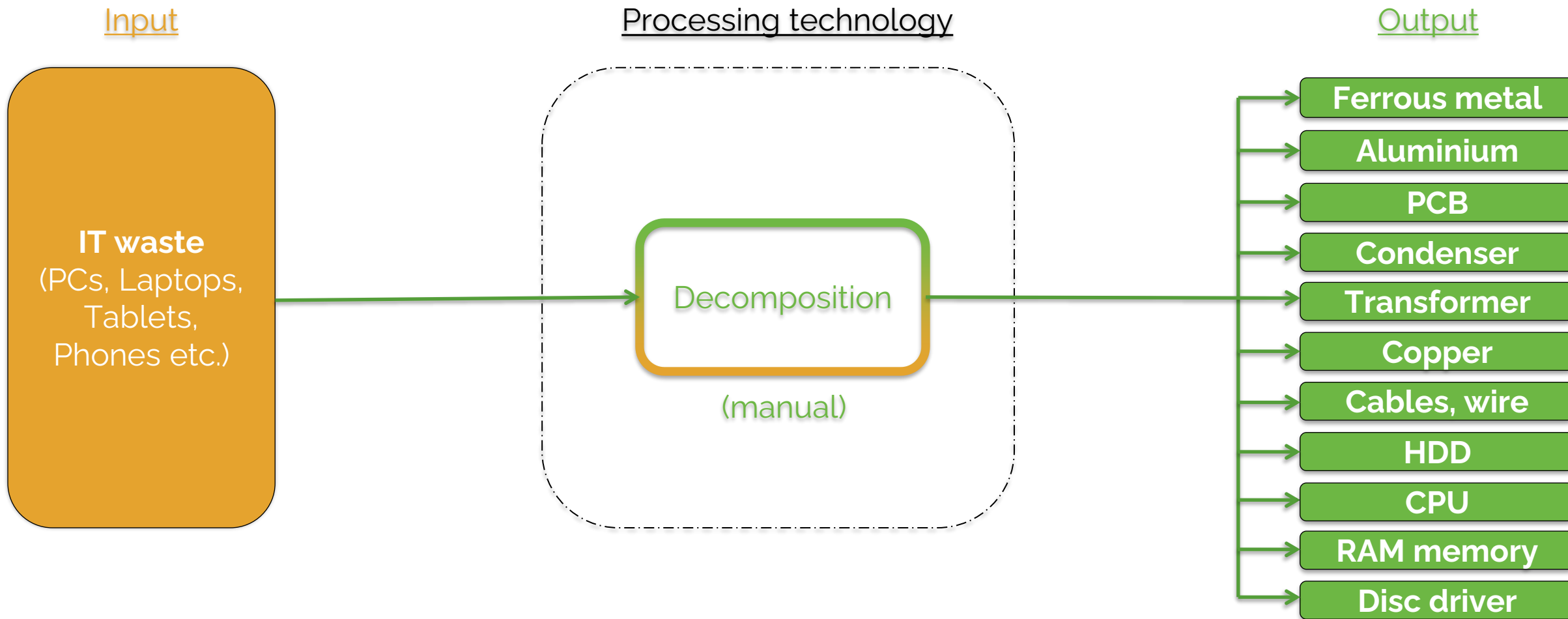


Processing technology

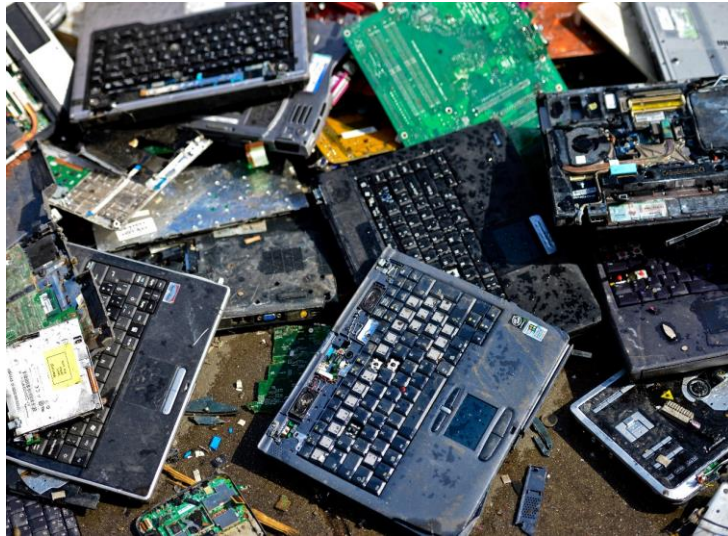


Output





Input

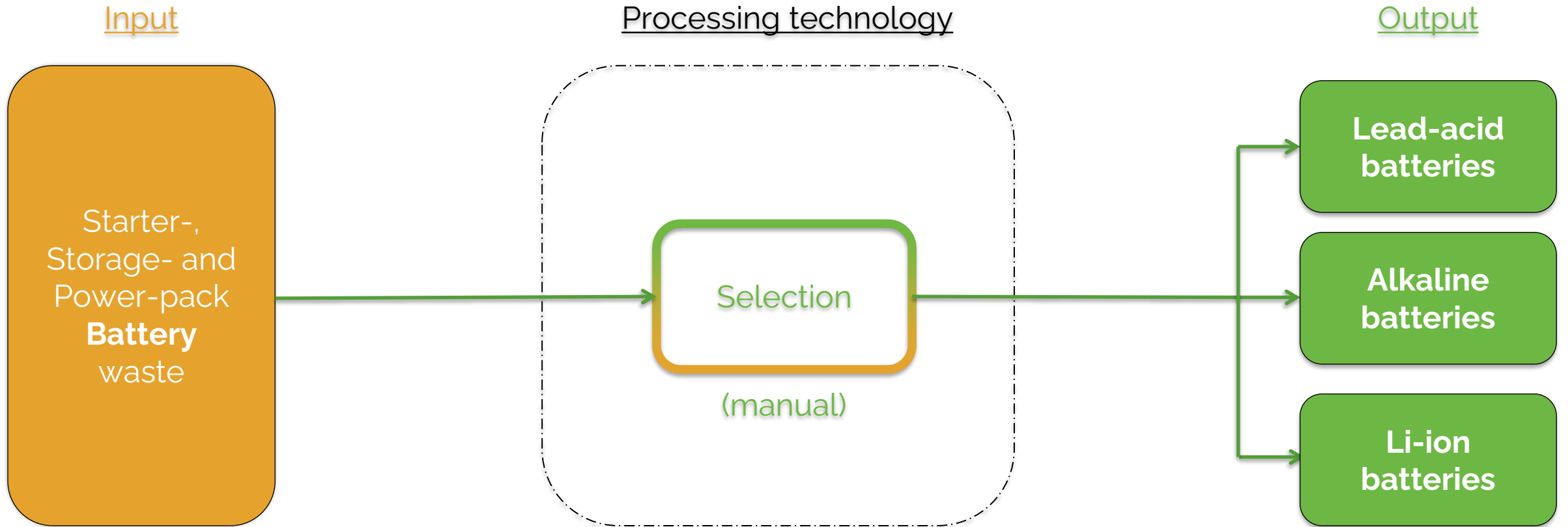


Processing technology



Output





Input

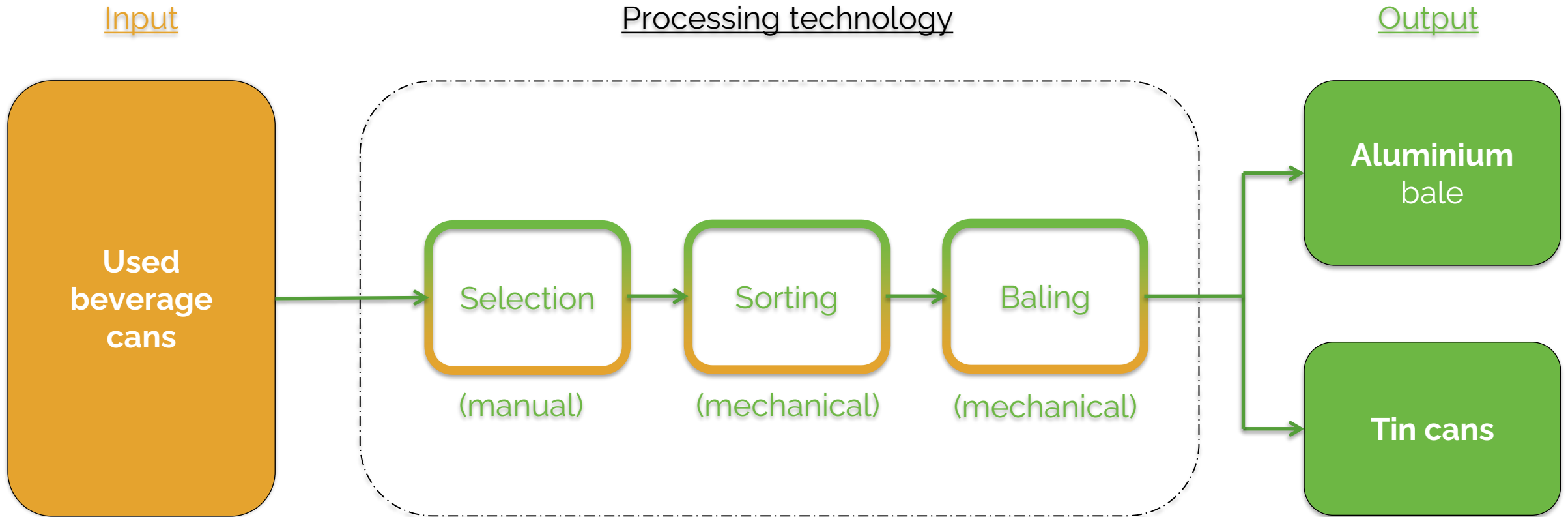


Processing technology



Output





Input

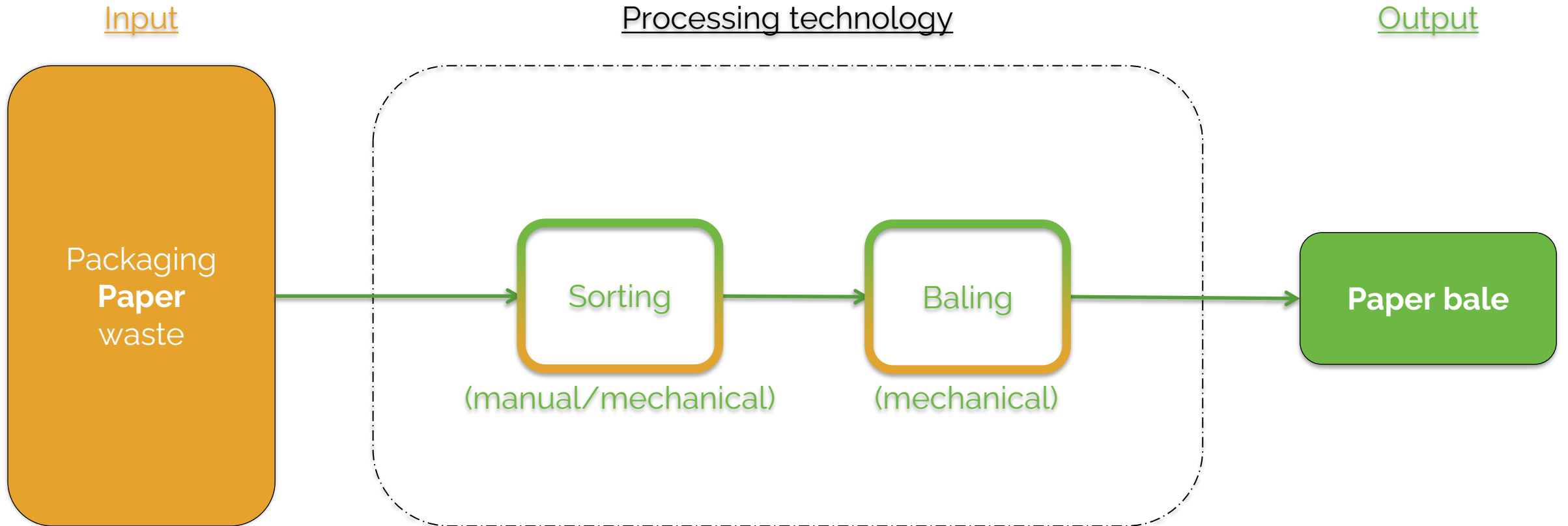


Processing technology



Output





Input

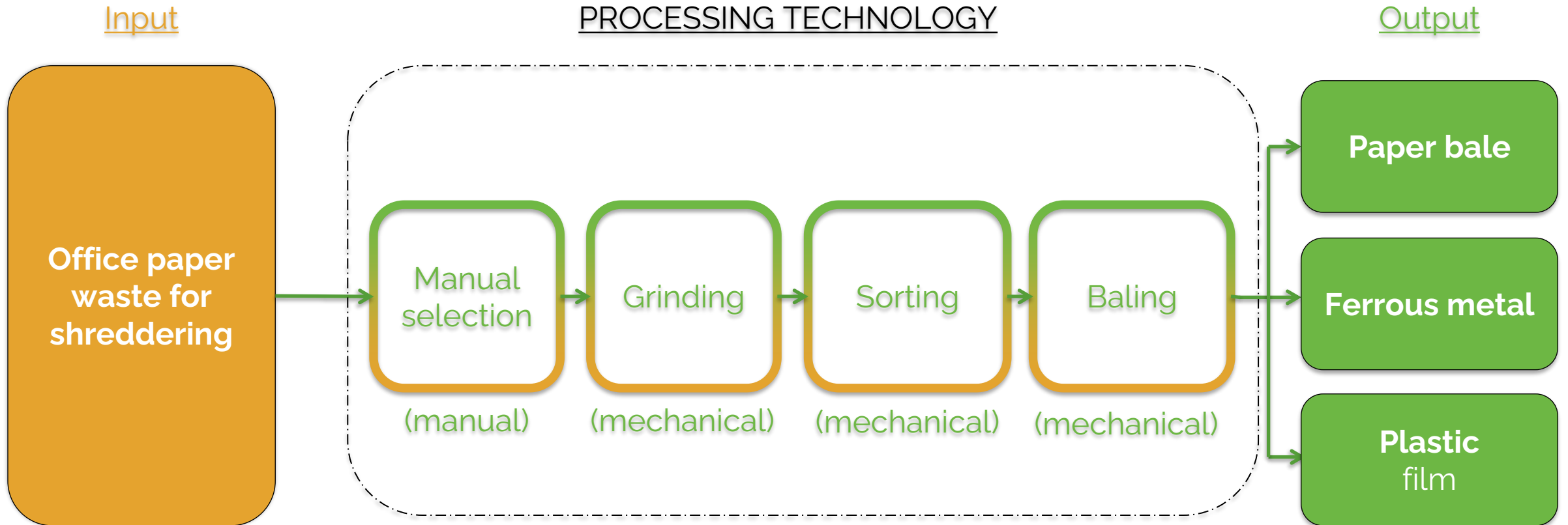


Processing technology



Output





Input

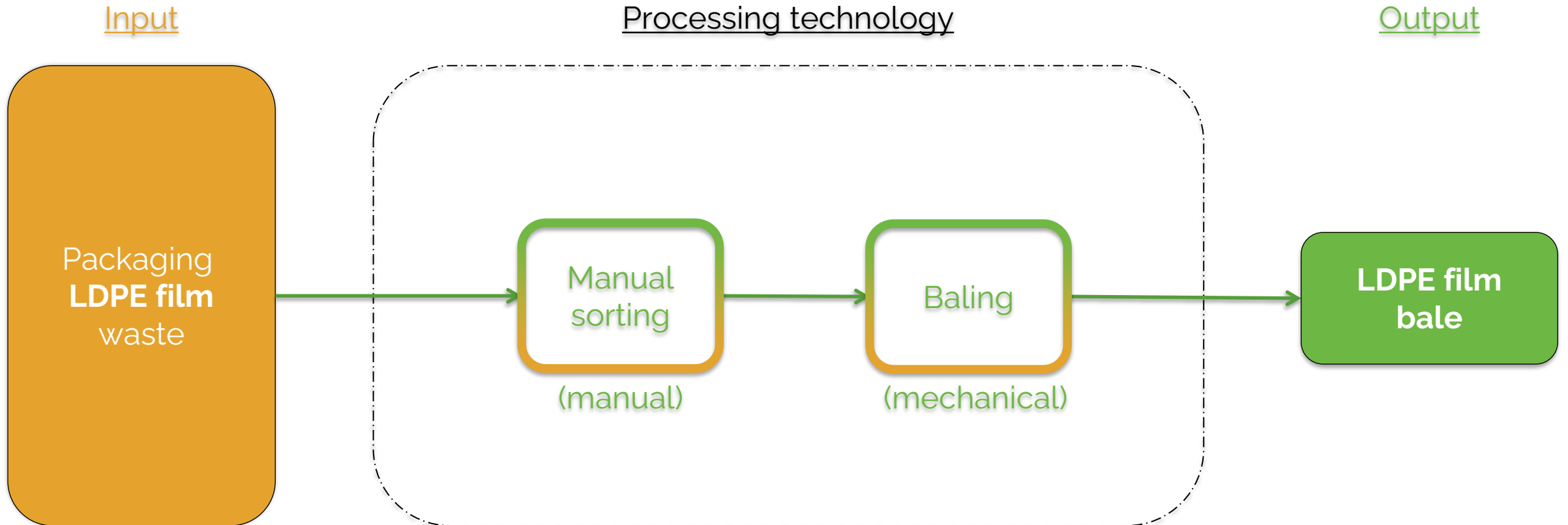


Processing technology



Output





Input

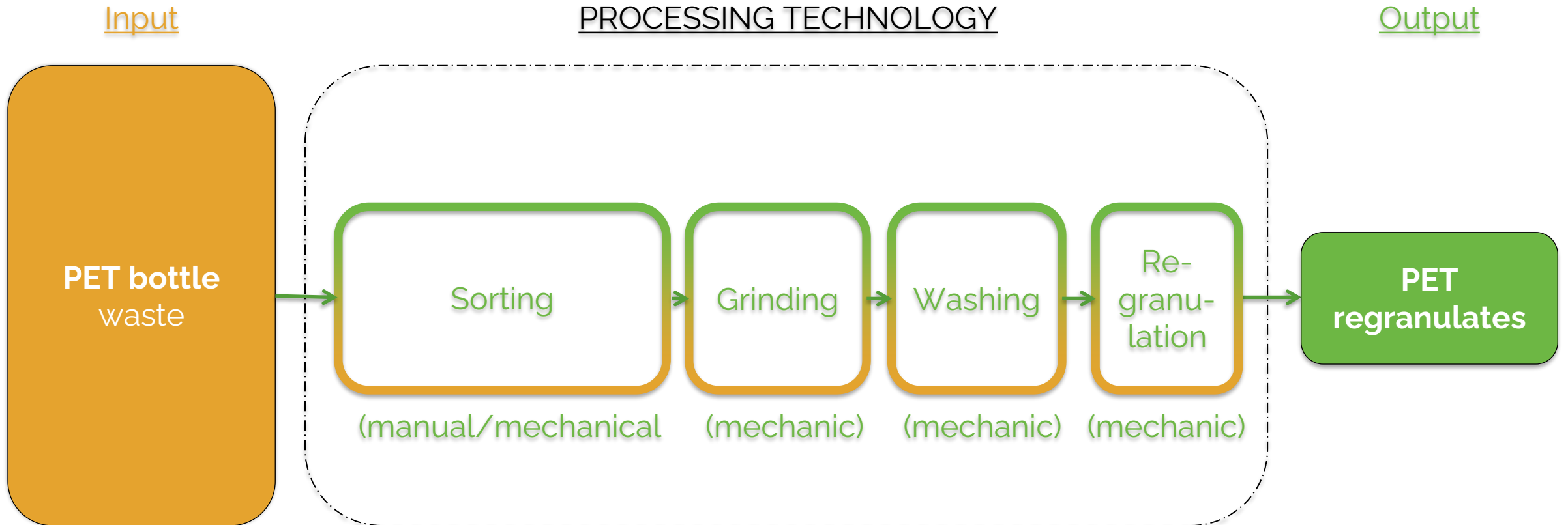


Processing technology



Output





Input
(PET bottle waste)



Output-v1.
(washed PET flakes)



Output-v2.
(PET regranulates)





**THANK YOU FOR
YOUR KIND
ATTENTION!**